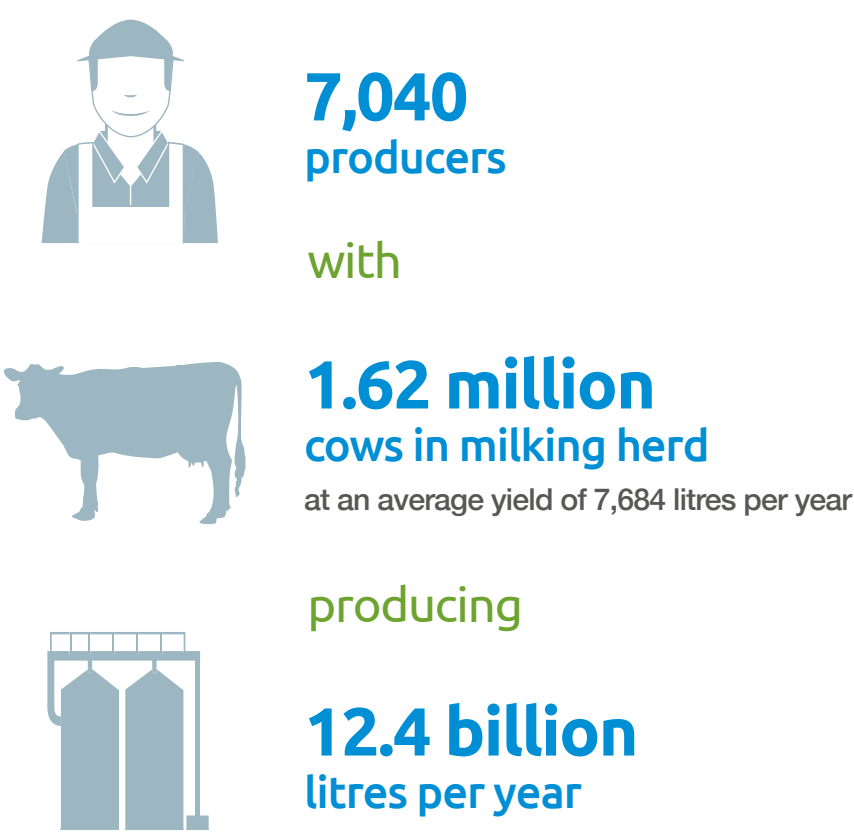


Dairy 2024 – a summary

Data compiled in May 2025



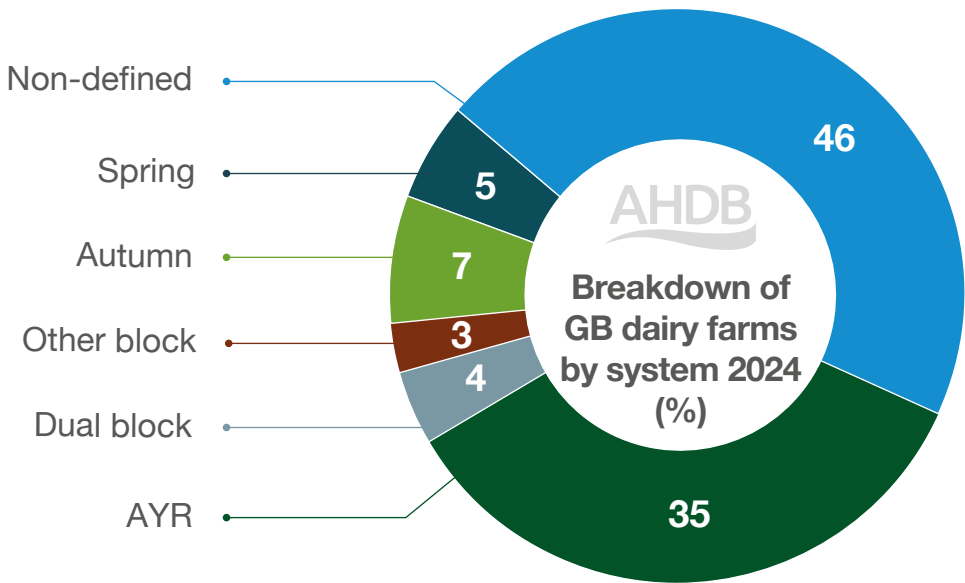
GB farm data as of 1 April 2025



Note: Milk production figures based upon 2024/25 milk year.
Source: AHDB, BCMS.

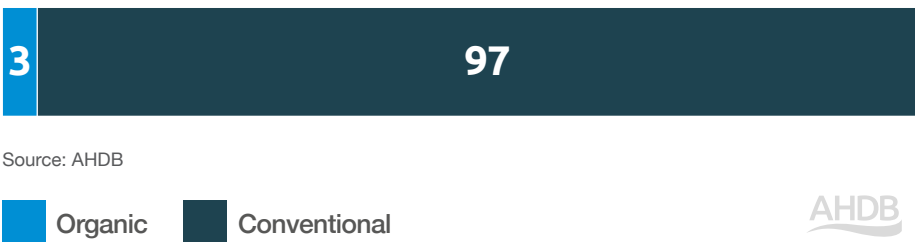
GB milk production

Calving patterns



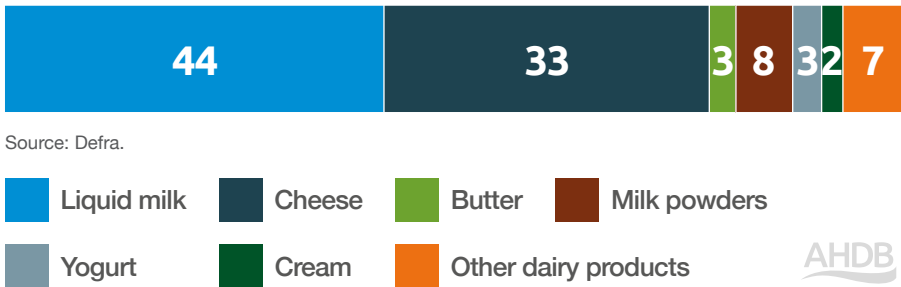
Spring block: 80% of registrations occur within 4 months from 1 Feb to 31 May.
Autumn block: 80% of registrations occur within 4 months from 1 Aug to 30 Nov or 1 Sep to 31 Dec.
Other block: 80% of registrations occur within 4 months other than defined in spring or autumn block.
Dual block: 90% of registrations occur within the spring block or autumn block windows defined above.
AYR: Registrations are spread relatively evenly throughout the year, but that can be based on a 10 to 12-month calving system.
Non-defined: covers any farm not falling into one of the other categories.
Source: BCMS, AHDB.

Organic vs conventional milk (%) (2024/25 milk year)

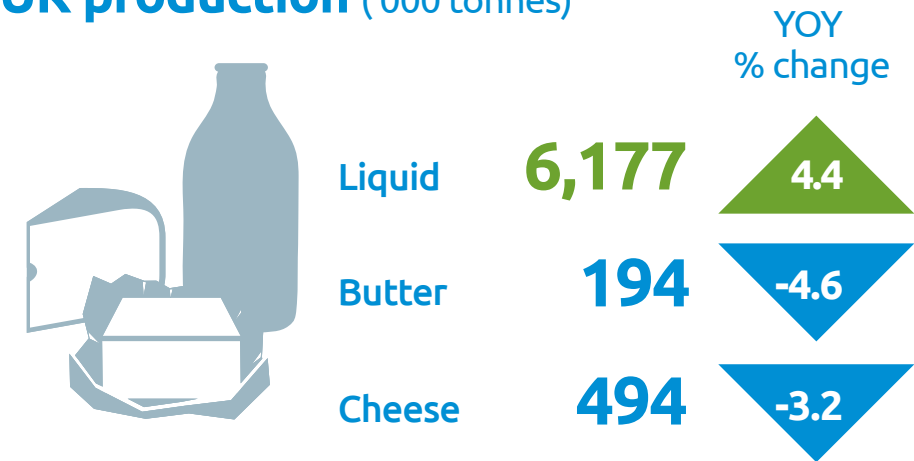


UK milk utilisation (2024/25 milk year)

Milk supply 14.2b litres (%)



UK production ('000 tonnes)



Note: Volumes are 12-month totals for the 2024/25 milk year.
Source: Defra.

GB retail spend (£b)

Current year



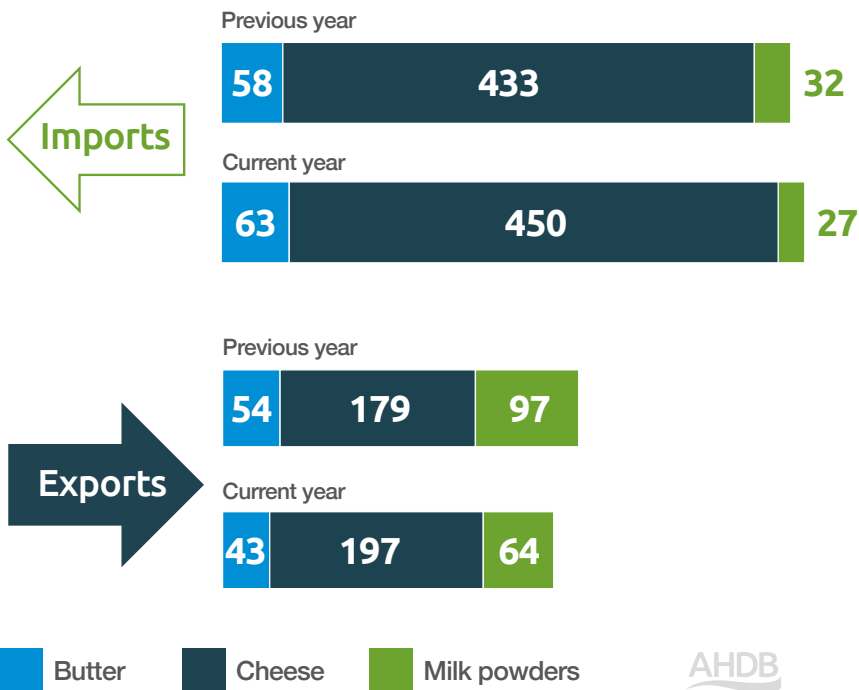
Previous year



Source: NIQ Panel on demand GB, value, cows dairy, 52 w/e 22 March 2025 and 52 w/e 23 March 2024.



UK trade ('000 tonnes)



Note: Full year trade 2024 v 2023.
Further publication of the trade data is prohibited, unless expressly permitted by Trade Data Monitor LLC.
Source: UK HMRC compiled by Trade Data Monitor LLC.